

TANBead® Nucleic Acid Extraction Kit

Plant RNA Extraction (6K3)

TANBead® Plant RNA Kit is intended for research use only. It is a nucleic acid purification kit based on magnetic bead technology by using with corresponding TANBead® Nucleic Acid Extractor, which can automatically isolate and high-purify plant RNA from a variety of plant samples. The purified RNA can be used with any downstream application employing RT-PCR, qRT-PCR and Northern blot. The kit can provide you automated, high-throughput and easy-to-use nucleic acids extraction to simplify the workflow and save your precious time.

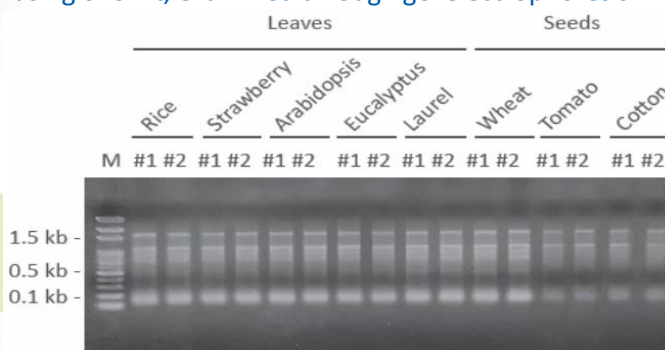
Feature	Specification
Application	RT-PCR, qRT-PCR and Northern blot.
Sample	Leaf or seed
Purification technology	Automation Magnetic beads
Typical yield	≤ 5 µg
Operation Time	45 - 60 min

Table. Yield and quality of extracted RNA from plant samples using 6K3 kit.

Sample type		Yield (µg)	260/280
Leaves	Rice	6.46±0.16	1.97±0.01
	Strawberry	6.46±0.18	1.97±0.01
	Arabidopsis	6.12±0.24	1.95±0
	Eucalyptus	6.17±0.10	1.94±0.04
	Laurel	6.18±0.22	1.96±0.01
Seeds	Wheat	6.68±0.20	1.95±0.04
	Tomato	4.45±0.15	1.72±0.06
	Cotton	4.9±0.04	2.06±0.18



Figure. Integrity of RNA extracted from leaves or seeds using 6K3 kit, examined through gel electrophoresis.



Sample Description	Test	Instrument	Reference No.	Ordering No. (RUO)
Plant RNA Auto Plate	96	SLA 32/ E132	6K3A46	301380
Plant RNA Auto Tube	96	SLA 32/ E132	6K3S46	301381
Plant RNA Auto Plate	96	M8/ M4800 series	M6K3A46	301383
Plant RNA Auto Tube	96	M8/ M4800 series	M6K3S46	301384
Plant RNA Auto Plate	96	M9600 series	W6K3A46	301406
Plant RNA Auto Tube	72	M9600 series	W6K3S66	301407



TANBEAD



Linkedin

Taiwan Advanced Nanotech Inc.

6F., No. 188, Wenhe Rd., Guishan Dist., Taoyuan City 333, Taiwan

Tel / +886-3-3167568 Fax / +886-3-3173369

Email / success@tanbead.com

Rapid
Highly efficient,
convenient and
time-saving

Efficacy
Only 30 mg plant
sample is enough for
use

Quality
High-quality RNA
suitable for RT-PCR,
qRT-PCR and
Northern blot

Test
Provide choices for
different sample inputs,
such as 8, 48 and 96
tests per run