

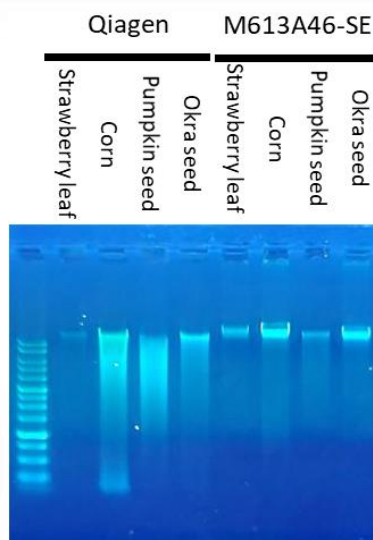
TANBead® Nucleic Acid Extraction Kit

Plant DNA Extraction (613)

TANBead® Plant DNA Kit is designed for isolating nucleic acid from various samples, which can be performed by using TANBead® Nucleic Acid Extractor and is intended for professional use only. TANBead® Nucleic Acid Extraction Kit is suitable for extracting nucleic acids from a variety of plant tissues, including plant leaves and mushrooms. This kit, with the Maelstrom 9600 series, enables automated nucleic acid extraction. With simple treatment of samples, it does not need repetitive centrifugations, reducing time for manual processing and lowering the risk of cross-contamination.

Feature	Specification
Application	PCR-based genotyping assay and qPCR
Sample	50-100 mg plant tissues, Leaf, seed or rice grain
Purification technology	Automation Magnetic beads
Typical yield	2-5 µg
Typical A260/A280	≥1.7
Operation Time	45-55 min

Plant DNA gel electrophoresis result.



The Performance Comparison between QIAGEN DNeasy Plant Pro Kit and TANBead Plant DNA Auto Plate (M613A46-SE)

M613A46-SE					Qiagen DNeasy Plant Pro Kit				
Plant tissue	UBQ (Ct)	Total yield (µg)	260/280	260/230	Plant tissue	UBQ (Ct)	Total yield (µg)	260/280	260/230
Strawberry Leaf	23.20	3.34±0.19	1.39±0.02	0.33±0.15	Strawberry Leaf	25.41	1.10±0.18	1.29±0.00	0.68±0.01
Corn	23.44	5.60±0.46	1.81±0.04	0.72±0.74	Corn	22.88	2.46±0.16	1.83±0.01	1.22±0.69
Pumpkin seed	24.49	0.92±0.85	1.66±0.03	0.17±0.21	Pumpkin seed	21.94	1.77±0.53	1.83±0.06	0.25±0.87
Okra seed	22.55	2.83±0.73	1.74±0.06	0.21±0.32	Okra seed	22.23	1.21±0.40	1.86±0.03	1.74±1.05

Sample Description	Test	Instrument	Reference No.	Ordering No. (RUO)
Plant DNA Auto Plate	96	SLA 32/ E132	613A46	301023
Plant DNA Auto Tube	96	SLA 32/ E132	613S46	301024
Plant DNA Auto Plate	96	M8/ M4800 series	M613A46	301134
Plant DNA Auto Tube	96	M8/ M4800 series	M613S46	301135
Plant DNA Auto Plate	96	M9600 series	W613A46	301194
Plant DNA Auto Tube	72	M9600 series	W613S66	301259



TANBEAD



Linkedin

Taiwan Advanced Nanotech Inc.

6F., No. 188, Wenhe Rd., Guishan Dist., Taoyuan City 333, Taiwan

Tel / +886-3-3167568 Fax / +886-3-3173369

Email / success@tanbead.com



Rapid

Highly efficient, convenient and time-saving



Efficacy

Provide choices for different sample inputs, such as 8, 48, 96 tests per run



Quality

High-quality DNA suitable for PCR-based genotyping assay and qPCR



Broad

Suitable for extracting nucleic acids from a variety of plant tissues