



TANBEAD

TANBead® Nucleic Acid Extraction Kit

Tissue Total DNA Extraction (6T2)

TANBead® Tissue Total DNA Kit is a nucleic acid purification kit based on magnetic bead technology by using with corresponding TANBead® Nucleic Acid Extractor, which can automatically isolate and purify total DNA from tissue. The purified DNA can be used with any downstream application which is qualitative or semi-quantitative assay. The kit is intended for use by technicians, physicians, and biologists with well-trained in molecular biological techniques, the techniques of magnetic bead purification and *in vitro* diagnostic procedures.

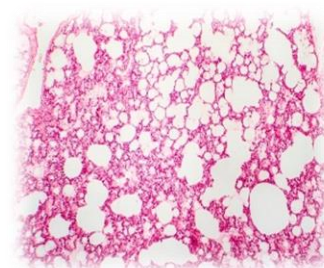
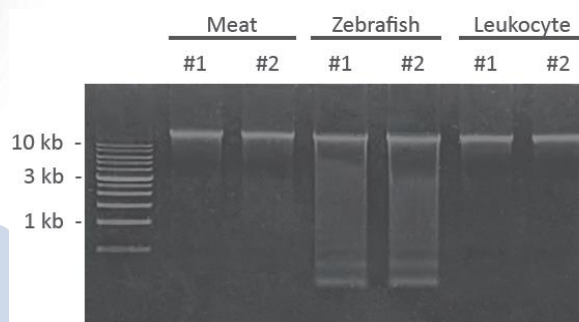
Feature	Specification
Application	PCR-based HLA-typing and NGS analysis
Sample	50~100 mg tissues or cells are recommended for each test
Purification technology	Automation Magnetic beads
Typical yield	≥ 2 µg
Typical A260/A280	≥ 1.7
Operation Time	70 - 80 min

Table. Yield and quality of extracted DNA from meat, zebrafish, or cells using 6T2 kit.

	50 mg meat		50 mg zebrafish		10 ⁶ cells	
	Mean	SD	Mean	SD	Mean	SD
Yield (µg)	31.09	0.61	29.29	0.54	22.52	0.01
Quality A260/A280	1.81	0.02	1.8	0	1.98	0.51



Figure. Confirmation of DNA integrity extracted from meat, zebrafish or leukocyte using 6T2 kit, examined through gel electrophoresis.



Sample Description	Test	Instrument	Reference No.	Ordering No. (IVD)
Tissue Total DNA Auto Plate	96	SLA 32/ E132	6T2A46	301598
Tissue Total DNA Auto Tube	96	SLA 32/ E132	6T2S46	301599
Tissue Total DNA Auto Plate	96	M8/ M4800 series	M6T2A46	301132
Tissue Total DNA Auto Tube	96	M8/ M4800 series	M6T2S46	301133
Tissue Total DNA Auto Plate	96	M9600 series	W6T2A46	301192
Tissue Total DNA Auto Tube	72	M9600 series	W6T2S66	301193



TANBEAD



Linkedin

Taiwan Advanced Nanotech Inc.

6F., No. 188, Wenhe Rd., Guishan Dist., Taoyuan City 333, Taiwan
Tel / +886-3-3167568 Fax / +886-3-3173369
Email / success@tanbead.com



Rapid

Highly efficient, convenient and time-saving



Efficacy

Provide choices for different sample inputs, such as 8, 48, 96 tests per run



Quality

High-quality DNA suitable for PCR, qPCR, Southern blot



Comprehensive

Not limited to any specific disorder, condition