

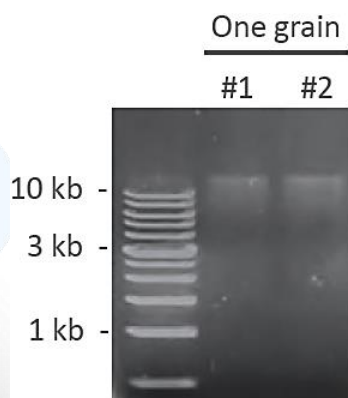
TANBead® Nucleic Acid Extraction Kit

Rice DNA Extraction (619)

TANBead® Rice DNA Kit with TANBead® Nucleic Acid Extractor (SLA-16 / 32, SLA-E13200 Series) simplifies the process of isolating rice DNA from grinding grain and cell lysis to DNA purification completely by automated system. In addition, because TANBead® has its own nano-beads for nucleic acid binding with high efficiency, it takes only one single grain of rice for nucleic acid extraction and is ideal for applications such as germplasm identification and laboratories of academic research. TANBead® Nucleic Acid Extractor can handle 32 rice samples simultaneously and the automated process can save labor and time by enhancing the extraction efficiency, consistency and reproducibility.

Feature	Specification
Application	PCR-based genotyping assay and qPCR
Sample	One single grain of rice
Purification technology	Automation Magnetic beads
Operation Time	100-120 min

Yield, quality and integrity of extracted DNA from rice grain samples using 619 kit.



	Mean	SD
Yield (µg)	14.1	3.24
Quality A260/A280	2.33	0.33



Rapid

Highly efficient, convenient and time-saving



Efficacy

Only one single grain of rice can nucleic acid extraction



Quality

High-quality DNA suitable for PCR-based genotyping assay and qPCR



Research

Ideal for such germplasm identification and laboratories of academic



Sample Description	Test	Instrument	Reference No.	Ordering No. (RUO)
Rice DNA Auto Plate	48	SLA 32/ E132	619A46	301030
Rice DNA Auto Tube	48	SLA 32/ E132	619S46	301031



TANBEAD



Linkedin

Taiwan Advanced Nanotech Inc.

6F., No. 188, Wenhe Rd., Guishan Dist., Taoyuan City 333, Taiwan
Tel / +886-3-3167568 Fax / +886-3-3173369
Email / success@tanbead.com