

TANBead® Nucleic Acid Extraction Kit

Plasmid DNA Extraction (6PE)

TANBead® Plasmid Extraction DNA Kit is a nucleic acid purification kit based on magnetic bead technology by using with corresponding TANBead® Nucleic Acid Extractor, which can automatically isolate and purify total DNA from E.coli strains. The purified plasmid can be used with any downstream application employing PCR, gel electrophoresis, sequencing, and cloning. The kit utilizes the unique non-alkaline lysis method to simplify the pre-treatment protocol of plasmid extraction. The plasmid preparation is not endotoxin-free. It is applicable for all molecular field.

Feature	Specification
Application	Nanodrop, PCR, agarose gel electrophoresis
Sample	<i>E. coli</i> culture (OD ₆₀₀ 1~5)
Purification technology	Automation Magnetic beads
Typical yield	≤ 2 µg
Typical A260/A280	1.7~2.0
Operation Time	27 - 30 min



Rapid

Non-alkaline lysis method to simplify the pre-treatment



Efficacy

Only 50 µL sample (OD₆₀₀ 1 - 5) is enough for use



Quality

High-quality DNA suitable for PCR, sequencing, cloning



Safety

The plasmid preparation is not endotoxin-free.



Figure. Gel electrophoresis of the extracted plasmid from different *E. coli* strains. 5 µL of each eluate or digested plasmid was loaded in a 1% agarose gel. M, 1 kb DNA marker. The *E. coli* strains were used ① BL21(DE3), ② DH10B, and ③ DH5α. The *E. coli* culture used OD₆₀₀ of 2.0 per test. After *EcoRI* digestion, the linearized plasmid band was shown in the expected size (2.7 kb).

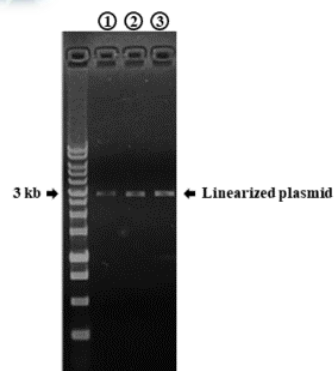


Table. The extraction of low-and high-copy plasmids by using M6PE or comparative T brand kit.

Sample type	TANBead-pUC18	TANBead - pET15b	T brand-pUC18	T brand-pET15b
^a Nucleic acids	2.65±0.06	1.63±0.18	5.84±0.39	5.16±0.02
^a 260/280	1.80±0.00	1.87±0.01	1.63±0.01	1.51±0.01
^b dsDNA	1.38±0.03	0.32±0.03	0.41±0.02	0.12±0.00

^a The total yield and 260/280 ratio were measured by Nanodrop.

^b The total yield of double-stranded DNA (dsDNA) is measured by Qubit.

Sample Description	Test	Instrument	Reference No.	Ordering No. (RUO)
Plasmid DNA Auto Plate	96	SLA 32/ E132	6PEA46	301567
Plasmid DNA Auto Tube	96	SLA 32/ E132	6PES46	301577
Plasmid DNA Auto Plate	96	M8/ M4800 series	M6PEA46	301578
Plasmid DNA Auto Tube	96	M8/ M4800 series	M6PES46	301579
Plasmid DNA Auto Plate	96	M9600 series	W6PEA46	301580
Plasmid DNA Auto Tube	72	M9600 series	W6PES66	301581



TANBead



Linkedin

Taiwan Advanced Nanotech Inc.

6F., No. 188, Wenhe Rd., Guishan Dist., Taoyuan City 333, Taiwan

Tel / +886-3-3167568 Fax / +886-3-3173369

Email / success@tanbead.com